

ORPHANAGE MAPPER

T.V V SATYA SURYA CHANDRA DIVYA¹, V.SIREESHA², S.KRISHNA CHAITANYA³, N.BASWANTH⁴

^{1, 2, 3, 4}Pursuing B.Tech (CSE) from St. Ann's College of Engineering & Technology. Chirala,
 Andhra Pradesh -, 523 187 INDIA

⁵Dr. P Harini working as HOD(CSE) in St. Ann's College of Engineering & Technology. Chirala,
 Andhra Pradesh -, 523 187 INDIA

t.divya1122@gmail.com¹, siri.sirisha95@gmail.com², krishnachaitanya@riseup.net³, baswanthnarra@gmail.com⁴

ABSTRACT

*This paper is based on a real time project used for knowing the details about orphanage homes around the city. **ORPHANAGE MAPPER** the detailed information about Orphans. In this paper a list of Orphanages in around the places of Chirala is provided. Usually people have lack of awareness about the places where the orphans live. Even though there are donators, they won't find a proper gateway to donate money. In that case the orphanage mapper proves quite helpful. With this technology, the people who are willing to help the orphans can have the map of all Orphanages, which are in and around the Chirala. In this paper we have the details of Orphans like; name of the Orphanage, name of the Orphan, age, either handicapped or not, address of the Orphanage. By this we can easily search the orphanages. We have two modules named Administration and User. The Administration can only enter the details of the Orphan after a specific authentication. The user can view the information about Orphans and donatemonney.*

INTRODUCTION

ORPHANAGE MAPPER is developed based on the underlying technology of .NET. We implemented our idea using the domain Data Mining. Data mining means retrieving the data from a large database [Reference-1]. The main theme of our project is to bring the awareness among the people about the orphanages. If anyone willing to help the orphans in

the manner of donations, they can login into this website and give all the details of donation that in which way they can help the orphans.

In Admin side, Admin will gather all the information about Orphanages and also provide all details about Orphans. Admin will login to the website and add all the information about the Orphanages and Orphans in the data base by using add orphan center and add orphan details tabs, and also check anyone willing to help the orphans.

In user side, User can view all the information which is given by the Admin. User cannot login to the website

DATA MINING

Data mining is a collection of techniques for efficient automated discovery of previously unknown, valid, novel, useful and understandable patterns in large databases. The patterns must be actionable so they may be used in an enterprise's decision making[Reference-2].

1.Efficient automated discovery of previously unknown patterns in large volumes of data.

2.Patterns must be valid, novel, useful and understandable.

3. Businesses are mostly interested in discovering past patterns to predict future behaviour.

A data warehouse, to be discussed later, can be an enterprise's memory. Data mining can provide intelligence using that memory.

Data Mining Uses:

- Fraud or compliance anomaly detection
- Intrusion Detection
- Lie Detection
- Market Basket Analysis
- Aids to marketing or retailing
- Customer segmentation and targeted marketing
- Medicare and Health care

RELATED WORK

In this there are two types of systems are there

1. Existing system
2. Proposed system

1. EXISTING SYSTEM:

Till now the people who wants to help the orphans, should go and contribute to the orphans. There is no facility for the people to know about all the orphanages even though they are willing to contribute the orphanages

2. PROPOSED SYSTEM:

In this paper, we developed a list of orphanages. In each Orphanage we store the information about Orphans like Name of the Orphan, Age, either

handicapped or not. In this Admin will gather all the information about orphanages and store into the database. And the user can view the information about the orphanages.

ADVANTAGES IN PROPOSED SYSTEM:

- Quick Retrieval of information about the Orphanages.
- Time Saving
Because we can easily search the Orphanages through Internet without wasting our time by going outside.
- We can also provide the awareness among the people with this website.

PROCEDURE:

This project deals with following functionalities.

- Add Orphanage Center
- Add Orphan Details
- View Details
- View Donor
- Areas
- Donations

ADD ORPHANAGE CENTER:

Administration adds the orphanages where they are placed. He collects all the information about all the orphanages

ADD ORPHAN DETAILS:

Administration adds the details about the orphans in particular orphanage like their name, age, etc.,

View Details:

Administration can view details about information about the orphanages. And according to it he can add more details about orphans.

VIEW DONOR:

Administration views the person who wants to donate to the orphans and orphanage

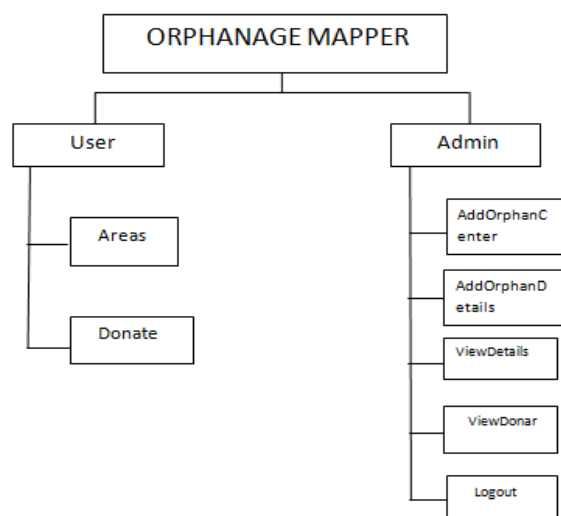
AREAS:

User can gather the information about the orphanage or orphans .So that he can donate something to that particular orphanage

DONATIONS:

User can donate the orphans by registering all the details.

SYSTEM ARCHITECTURE



ADVANTAGES

- By this we can easily search the orphans
- In less time we can contact the orphanage
- It is easy process, to join a orphan in orphanage
- Who are willing to donate the orphans they can donate easily by using this website.

FUTURE ENHANCEMENT

In future this work can be extended to show the location and provide online payment options.

CONCLUSION

In earlier days, people are not having that much of awareness about the orphanages. So, by this work people easily know about the orphanages and can help them.

Quick retrieval of information about the Orphanages by using this website.

REFERENCES

- Bikash Mukopadhyay, center for intelligent information retrieval, CIIR.
- Mrs. Bhavana Tiple, Sachin Dhande, Knowledge retrieval and Data mining, !st international conference on research.